



Graver Technologies

FILTRATION | SEPARATION | PURIFICATION



WaterTEC™ Series Filter Cartridges

Absolute Rated Polyethersulfone Membrane Filter Cartridges

Product Specifications

Media: Asymmetric Polyethersulfone Membrane

Inner core, end caps, cage: Polypropylene

Support layers: Spunbonded Polypropylene

Gaskets/O-Rings:

Buna-N, EPDM, Silicone, Teflon Encapsulated
Viton (O-Rings only), Viton

Micron ratings: 0.05, 0.1, 0.2, 0.45, 0.65 µm

Dimensions

Nominal lengths:

5" 9.75" 10" 20" 30" 40"
12.7 24.8 25.4 50.8 76.2 101.6 cm

Outside diameter: 2.7" (6.9 cm)

Inside diameter: 1.0" (2.54 cm)

Surface area: 6.0 ft² (0.56 m²) per 10" element

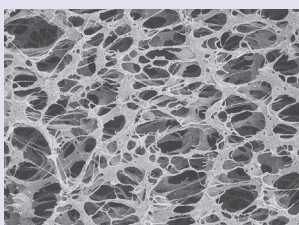
Operating Parameters

Maximum sustained operating temperature:
176°F (80°C) at 20 psid (1.38 bar)

Maximum differential pressure:
75 psid @ 70°F (5.2 bar @ 21°C)
30 psid @ 176°F (2.0 bar @ 80°C)

Maximum reverse differential pressure:
40 psid @ 70°F (2.8 bar @ 21°C)

Recommended change-out pressure:
35 psid (2.4 bar)



The WaterTEC filter series is constructed of absolute rated, hydrophilic, asymmetric polyethersulfone membrane and polypropylene components. The filter is designed for overall filtration economy and provides excellent flow rates and throughputs.

FEATURES & BENEFITS

- Low pressure drop reduces energy costs
- High dirt holding capacity minimizes change-outs and down time
- All thermal bonded construction with no adhesives
- Available in all common configurations to allow use of existing filter housings
- Cost-effective absolute filtration

CERTIFICATIONS

- USP Class VI: Meets USP Class VI Biological Test for Plastics
- FDA Listed Materials: All materials comply with FDA Title 21 of the Code of Federal Regulations Sections 174.5, 177.1520, and 177.2440 as applicable for food and beverage contact.
- European Directive for Food Contact: European Regulation No. 1935/2004 and European Regulation 10/2011: Tested for migration behavior and is suitable for contact with all kinds of foodstuffs with minimal rinse-up. Data available upon request.

TYPICAL APPLICATIONS

- General water filtration
- DI water post filter
- DI water prefilter
- Aqueous based chemical processing

PERFORMANCE SPECIFICATIONS

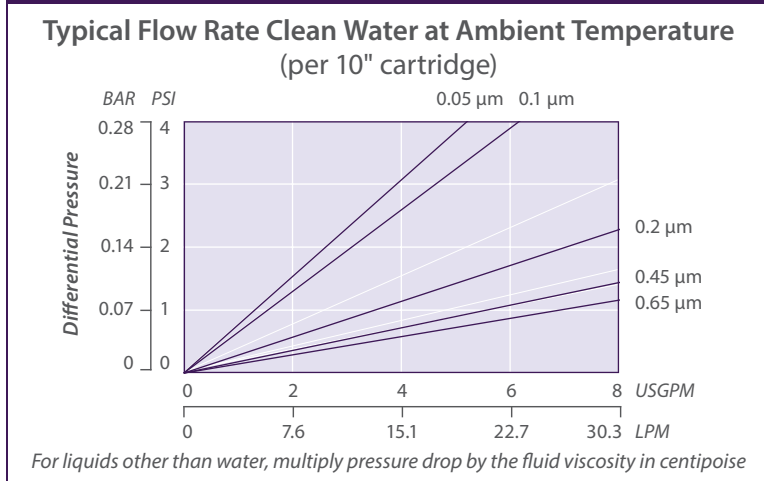
- Cleaning/Sanitization: Compatible with most common chemical cleaning, sanitizing and sterilizing agents and with pH range from 1–14. Consult factory for specific compatibility information.
- Steam/Autoclave: Cartridges may be autoclaved for 30 minutes at 250 °F (121°C) under no end load conditions. Cartridges fitted with steam insert may be steamed for at least 10 thirty-minute cycles @ 275°F (135°C) not to exceed 3 psid (0.21 bar).

WATERTEC NOMENCLATURE INFORMATION

Filter Type	Retention Rating (microns)		Nominal Length (inches)		End Configuration		Gasket or O-Ring		Options	
WaterTEC Series	0.05	0.45	-5	-20	P	Double Open End	B	Buna-N	-I	End Cap Insert
	0.1	0.65	-9.75*	-30	P2	226/Flat Single Open End	E	EPDM		
	0.2		-10	-40	P3	222/Flat Single Open End	S	Silicone	-R	Factory Pre-Rinse
					P7	226/Fin Single Open End	T	Teflon encap. Viton (O-Rings only)		
					P8	222/Fin Single Open End				
				AM	Single Open End, Internal O-Ring	T	Teflon Gasket			
				NPC	Double Open End, Internal O-Ring	V	Viton			
Example: WaterTEC 0.2-10P2E-R										
WaterTEC	0.2		-10		P2		E		-R	

*Available only for DOE (P) configuration

WATERTEC FLOW RATE



FOR MORE INFORMATION

Customer Service/Technical Support: 1-888-353-0303
 Europe (UK): +44-1424-777791 | China: +86-21-5238-6576
 Asia: +65-9635-7690

GTX-258 6-17



All information and recommendations appearing in this bulletin concerning the use of products described herein are based on tests believe to be reliable. However, It is the user's responsibility to determine the suitability for his own use of such products. Since the actual use by others is beyond our control, no guarantee, expressed or implied, is made by Graver Technologies as to the effects of such use or the results to be obtained. Graver Technologies assumes no liability arising out of the use by others of such products. Nor is the information herein to be construed as absolutely complete, since additional information may be necessary or desirable when particular or exceptional conditions or circumstances exist or because of applicable laws or government regulations. WaterTec is a trademark of Graver Technologies, LLC.

DISTRIBUTED BY



Graver Technologies | 200 Lake Drive, Glasgow, DE 19702 | 302-731-1700 | 800-249-1990
 Fax: 1-302-369-0938 | info@gravertech.com | www.gravertech.com

A member of The Marmon Group—A Berkshire Hathaway Company