



# Crystal MBF Series Filter Cartridges

## Melt Blown Filters

An economical, melt blown filter element that can be used in a wide range of applications. The Crystal MBF depth filter is constructed of 100% polypropylene media for chemical compatibility with a variety of process fluids. The unique Crystal Core prevents collapse even at elevated temperatures.

### Product Specifications

**Media:** Polypropylene

**End caps/Center Core:** Polypropylene

**Micron rating:**

1, 3, 5, 10, 20, 30, 50, 75 µm

### Dimensions

**Nominal lengths:**

9.75" 10" 20" 30" 40"  
24.8 25.4 50.8 76.2 101.6 cm  
*(Other lengths available)*

**Outside diameter:** 2.5" (6.35 cm),  
2.63" (6.7 cm) End capped

**Inside diameter:** 1.1" (2.79 cm)

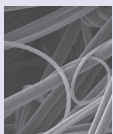
### Operating Parameters

**Maximum differential pressure:**

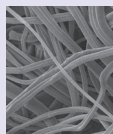
65 psid @ 68°F (4.5 bar @ 20°C)  
50 psid @ 100°F (3.4 bar @ 38°C)  
25 psid @ 170°F (1.7 bar @ 77°C)

**Recommended change-out pressure:**

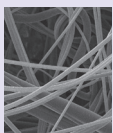
35 psid (2.4 bar)



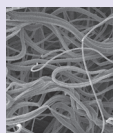
Outer prefilter zone



Inner prefilter zone



Final pre-filter zone



Final filtration zone

### FEATURES & BENEFITS

- Available in nominal ratings from 1 to 75 microns
- Formed Crystal Core for excellent collapse strength
- Graded pore construction for long on-stream life
- Melt blown media resists dirt unloading as differential pressure increases
- Non-shedding
- High dirt holding capacity
- Economical depth filtration
- Free of binders, adhesives and surfactants
- Highly consistent performance

### CERTIFICATIONS

- USP Class VI: Meets USP Class VI Biological Test for Plastics
- FDA Listed Materials: All materials comply with FDA Title 21 of the Code of Federal Regulations Sections 174.5, and 177.1520, as applicable for food and beverage contact.
- NSF 61: Certified to NSF/ANSI STD 61 for materials requirements only — Component
- European Directive for Direct Food Contact: European Regulation No. 1935/2004 and European Regulation 10/2011: Tested for migration behavior and is suitable for contact with all kinds of foodstuffs with minimal rinse-up. Data available upon request.

### TYPICAL APPLICATIONS

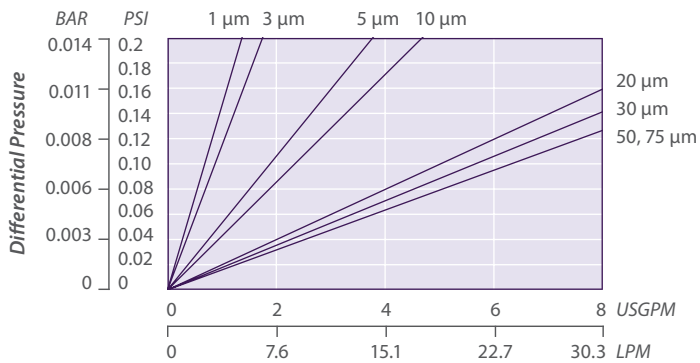
- RO Prefilters
- Wastewater
- Food and beverages
- Chemicals
- Blowdown post filter
- Radwaste
- Aqueous solutions
- Inks

## CRYSTAL MBF NOMENCLATURE INFORMATION

Filter Type	Retention Rating (microns)		Nominal Length (inches)		End Configuration	Gasket or O-Ring
CMBF Series	1	20	-5	-29.25	N None (Cut Ends)	N None
	3	30	-9.75	-30		
	5	50	-10	-39		
	10	75	-19.5	-40		
<b>Example: CMBF 10-20NN</b>						
CMBF	10		-20		N	N

## CRYSTAL MBF FLOW RATE

### Typical Flow Rate Clean Water at Ambient Temperature (per 10" cartridge)



For liquids other than water, multiply pressure drop by the fluid viscosity in centipoise



Certified to NSF/ANSI Standard 61 for materials requirements only.

COMPONENT

### FOR MORE INFORMATION

Customer Service/Technical Support: 1-888-353-0303  
 Europe (UK): +44-1424-777791 | China: +86-21-5238-6576  
 Asia: +65-9635-7690

GTX-339 4-18



### DISTRIBUTED BY

All information and recommendations appearing in this bulletin concerning the use of products described herein are based on tests believe to be reliable. However, It is the user's responsibility to determine the suitability for his own use of such products. Since the actual use by others is beyond our control, no guarantee, expressed or implied, is made by Graver Technologies as to the effects of such use or the results to be obtained. Graver Technologies assumes no liability arising out of the use by others of such products. Nor is the information herein to be construed as absolutely complete, since additional information may be necessary or desirable when particular or exceptional conditions or circumstances exist or because of applicable laws or government regulations.



Graver Technologies | 200 Lake Drive, Glasgow, DE 19702 | 302-731-1700 | 800-249-1990  
 Fax: 1-302-369-0938 | info@gravertech.com | www.gravertech.com

A member of The Marmon Group—A Berkshire Hathaway Company