



Graver Technologies

FILTRATION | SEPARATION | PURIFICATION

# PME™ Series Filter Cartridges

*“Absolute” Rated Economical  
Pleated Filter Cartridges*

## Product Specifications

**Media:** Polypropylene

**Inner core, end caps, cage:**  
Polypropylene

**Gaskets/O-Rings:**

Buna-N, EPDM, Silicone, Viton, Teflon  
Encapsulated Viton (O-Rings only)

**Micron ratings:**

0.2, 0.45, 1.0, 2.5, 5.0, 10, 25, 50 µm

## Dimensions

**Nominal lengths:**

5" 9.75" 10" 20" 30" 40"  
12.7 24.8 25.4 50.8 76.2 101.6 cm

**Outside diameter:** 2.55" (6.48 cm)

**Inside diameter:** 1.0" (2.54 cm)

## Operating Parameters

**Maximum operating temperature:**  
176°F (80°C)

**Maximum differential pressure:**  
50 psid @ 70°F (3.4 bar @ 21°C)  
25 psid @ 176°F (1.7 bar @ 80°C)

**Recommended change-out pressure:**  
35 psid (2.4 bar)

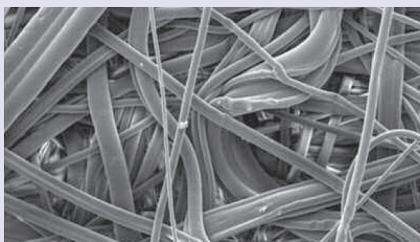
For cost driven applications, choose the PME Series to deliver absolute efficiency in a broad range of particle sizes. This all polypropylene filter is suitable for a wide range of applications and carries all the needed industry certifications to satisfy most critical requirements. In addition, the slightly smaller diameter ensures easy retrofit in installed housings designed to accept depth filters. The pleated construction provides high dirt holding capability and low pressure drops.

## FEATURES & BENEFITS

- Micron ratings from 0.2 to 50 µm — Broad application range
- 2.55" diameter to fit installed housings with ease
- “Absolute” Efficiency — Rated at 99.98% (Beta 5000)
- Optimized surface area — High dirt holding for long service life
- Fixed pore structure — Eliminates dirt unloading at maximum differential pressure
- Polypropylene Construction — Inert to many process fluids
- Various Gasket/O-Ring materials — Compatible with a variety of fluids
- Manufactured in continuous lengths up to 40 inches

## FEATURES & BENEFITS

- FDA Listed Materials — All materials comply with FDA Title 21 of the Code of Federal Regulations Sections 174.5, and 177.1520, as applicable for food and beverage contact.



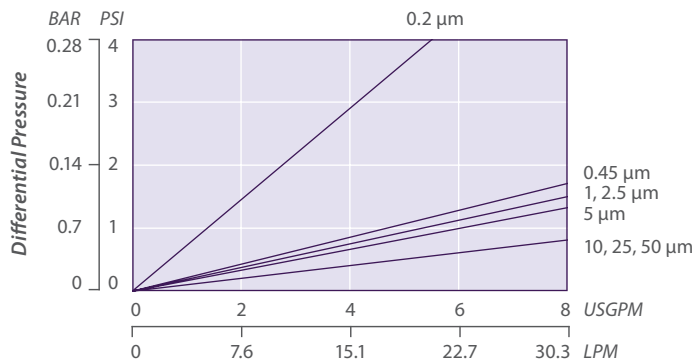
## PME NOMENCLATURE INFORMATION

Filter Type	Retention Rating (microns)		Nominal Length (inches)		End Configuration	Gasket or O-Ring
PME Series	0.2	5	-5	-20	P Double Open End	B Buna-N
	0.45	10	-9.75*	-30	P2 226/Flat Single Open End	E EPDM
	1	25	-10	-40	P3 222/Flat Single Open End	S Silicone
	2.5	50			P7 226/Fin Single Open End	T Teflon encap. Viton (O-Rings only)
				P8 222/Fin Single Open End	V Viton	
<b>Example: PME 5-10P3B</b>						
PME	5		-10		P3	B

\*Available only for DOE (P) configuration

## PME FLOW RATE

### Typical Flow Rate Clean Water at Ambient Temperature (per 10" cartridge)



For liquids other than water, multiply pressure drop by the fluid viscosity in centipoise

## REMOVAL EFFICIENCY

Beta Ratio Efficiency	Beta 5000 99.98%	Beta 10 90%
0.2 μm	0.20	0.08
0.45 μm	0.45	0.25
1 μm	1.0	0.5
2.5 μm	2.5	1.0
5 μm	5.0	1.8
10 μm	10.0	6.0
25 μm	25.0	11.0
50 μm	45.0	25.0

$$\text{Beta Ratio} = \frac{\text{Upstream particle counts}}{\text{Downstream particle counts}}$$

The micron ratings shown at various efficiency and beta ratio value levels were determined through laboratory testing, and can be used as a guide for selecting cartridges and estimating their performance. Under actual field conditions, results may vary somewhat from the values shown due to the variability of filtration parameters.

Testing was conducted using the single-pass test method, water at 3 gpm/10" cartridge. Contaminants included latex beads, coarse and fine test dust. Removal efficiencies were determined using dual laser source particle counters.

## FOR MORE INFORMATION

Customer Service/Technical Support: 1-888-353-0303  
 Europe (UK): +44-1424-777791 | China: +86-21-5238-6576  
 Asia: +65-9635-7690

GTX-345 6-18



## DISTRIBUTED BY

All information and recommendations appearing in this bulletin concerning the use of products described herein are based on tests believed to be reliable. However, it is the user's responsibility to determine the suitability for his own use of such products. Since the actual use by others is beyond our control, no guarantee, expressed or implied, is made by Graver Technologies as to the effects of such use or the results to be obtained. Graver Technologies assumes no liability arising out of the use by others of such products. Nor is the information herein to be construed as absolutely complete, since additional information may be necessary or desirable when particular or exceptional conditions or circumstances exist or because of applicable laws or government regulations. PME is a trademark of Graver Technologies, LLC.



Graver Technologies | 200 Lake Drive, Glasgow, DE 19702 | 302-731-1700 | 800-249-1990  
 Fax: 1-302-369-0938 | info@gravertech.com | www.gravertech.com

A member of The Marmon Group—A Berkshire Hathaway Company